

Start by setting up a grid at $\frac{1}{8}$ "
 then turn on snap to grid.

Draw a board outline as per
 dimensions shown

Place pads at locations shown

Place nano at location shown

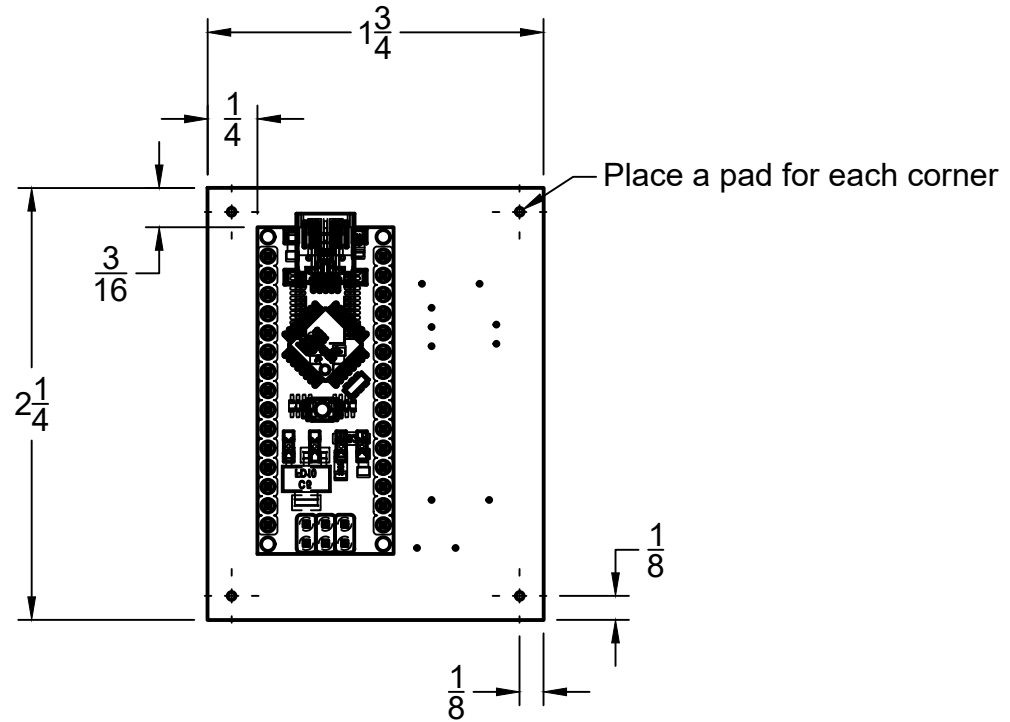
Place 'keep outs' at pad locations,
 round with diameter of $\frac{3}{16}$ "

Arrange parts to the right of Nano
 (consult example board)

Autoroute to create traces

Check to see all 'rat lines' have
 been eliminated.

Make adjustments as necessary



		PROJECT		
		Isfeld		
		TITLE		
		PCB Board Dimensions & Locations		
APPROVED	SIZE	CODE	DWG NO	REV
CHECKED	A			
DRAWN	James Tattrie	2023-10-26	SCALE 1:1	WEIGHT
			SHEET 1/1	