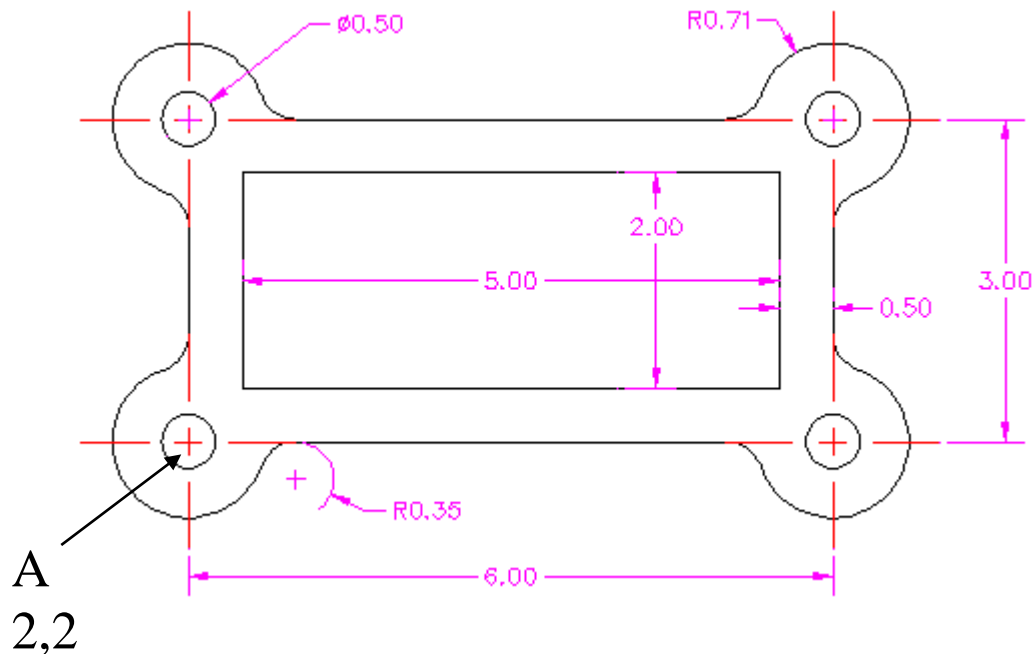


# Introduction to AutoCAD 2013

## Gasket #1

Before you start this drawing you need to complete Assignment #3 (borders). Reproduce the image shown below. Read the instructions carefully before you begin.



You need to figure out what commands to use and the order you will use them in to reproduce this drawing. You should have 10 to 15 commands in total that are needed. Remember that this is a puzzle and you need to find the clues that will make reproducing this drawing quick and easy. The following is a list of possible commands you will use (you will use some of them more than once);

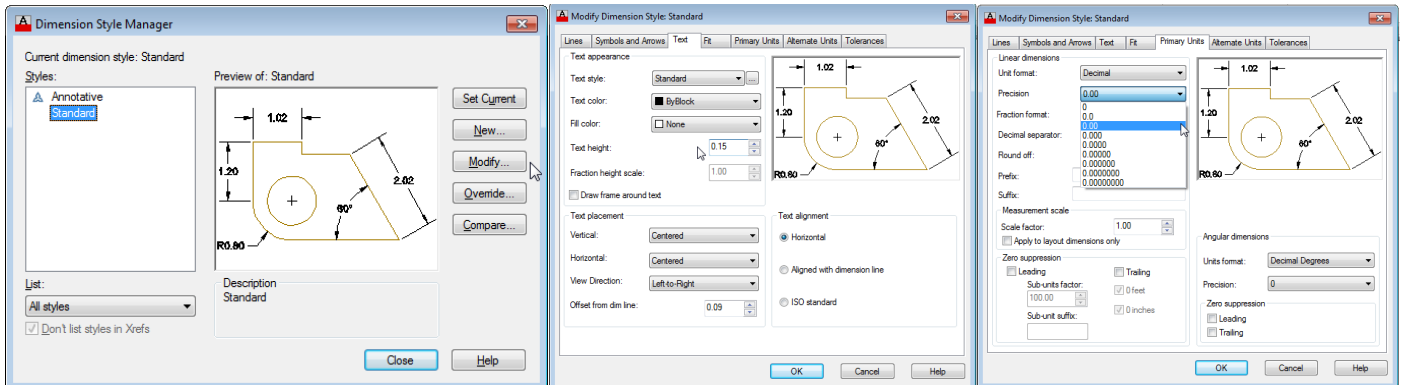
Line, circle, fillet, offset, trim, copy, move, mirror, dimension, layer, text

1. Starting with your **Imperial Border template**. Open your Imperial Border template drawing and then immediately save it as; **gasket1-name.dwg**
2. Begin this drawing with point "A" at 2,2. Draw the object based on the command list you have created.

**HINT:** Only draw ONE quarter of the gasket and then MIRROR it ☺

3. Once the drawing is complete change LAYERS for the center lines and add center lines.

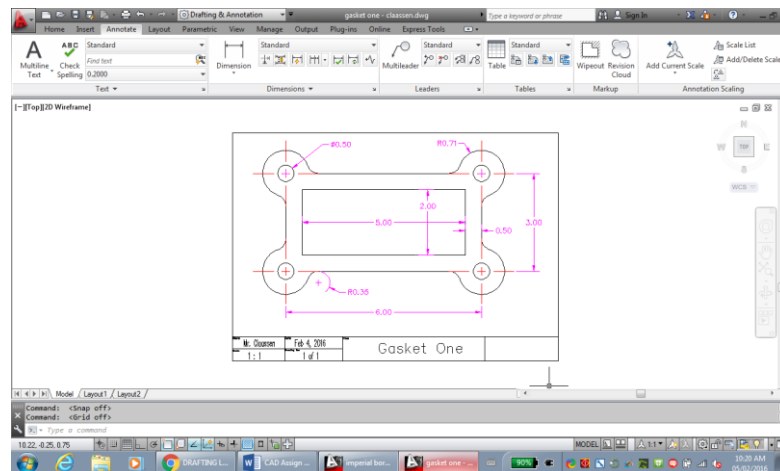
- Now change LAYERS to “Dimensions”. You need to change a few things (text height and Precision) before you start dimensioning in the “Modify Dimension Style” settings. To find this setting type **DIMSTYLE**. The first image below comes up. Select “Modify” on the right side of the dialog box. Under the “Text” tab (middle image), change the text height to .15. Under the “Primary Units” tab (right image), change Precision to 2 decimal places.



- Add your dimensions as shown in the drawing on the first page. You need the following types;

Linear Radius Diameter

- Finally add text to your title block (change layers to border). When you add text to a title block it is part of the title block and border layer. The “TEXT LAYER” is for other text, notes or comments in the drawing, NOT the Title Block. You may have to change text height and scale factor to make your name, date and title fit in the spaces.
- When you are finished, your drawing should look like the one below. Print it.



Marking

Layers correct (2)  
 Drawing correct (5)  
 Printed correctly (1)  
 Dimensioned correctly (2)

Mark /10