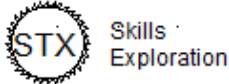


Introduction to AutoCAD 2013

Creating a Personalize Border

Using the software, create the following title block using the commands you have learned through the video. Video located under resource to support the lesson.

Name:		Scale:		Title:		
Date:		Drawing No:				

Commands to Use/Learn:

Polar Coordinate Entry
Relative Coordinate Entry

OSNAP
Copy
Scale

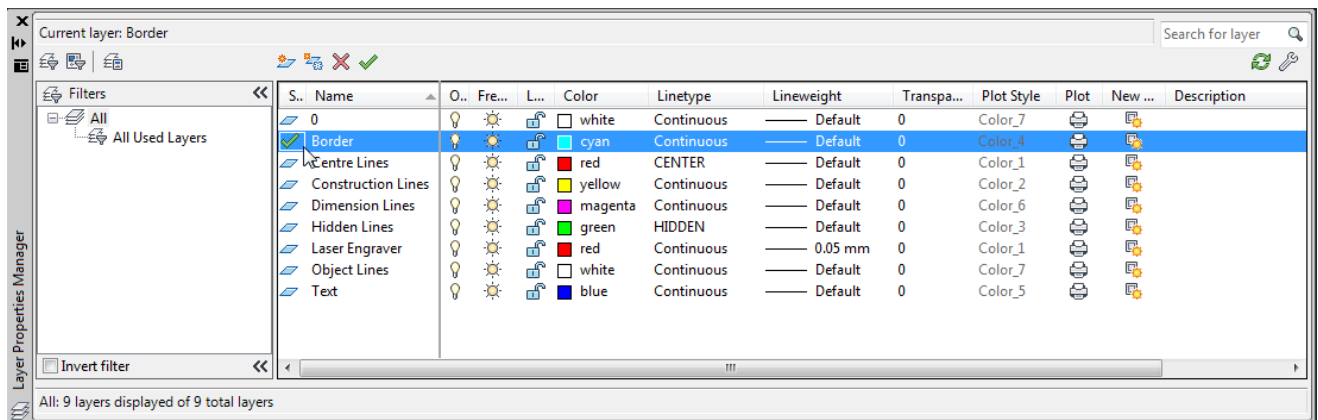
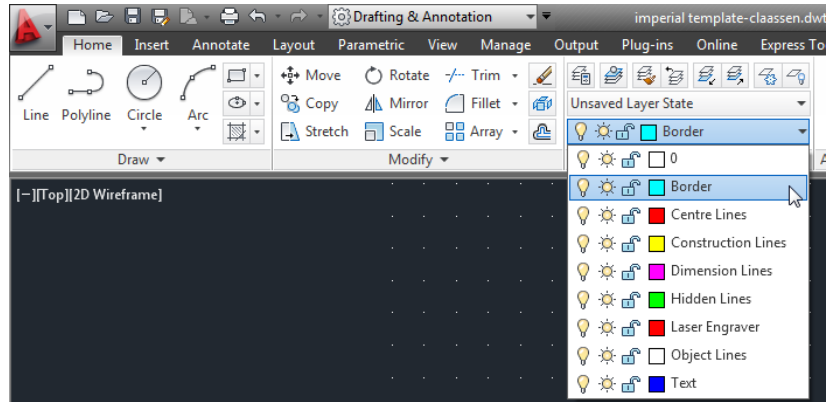
Move
Offset

Extend
Text

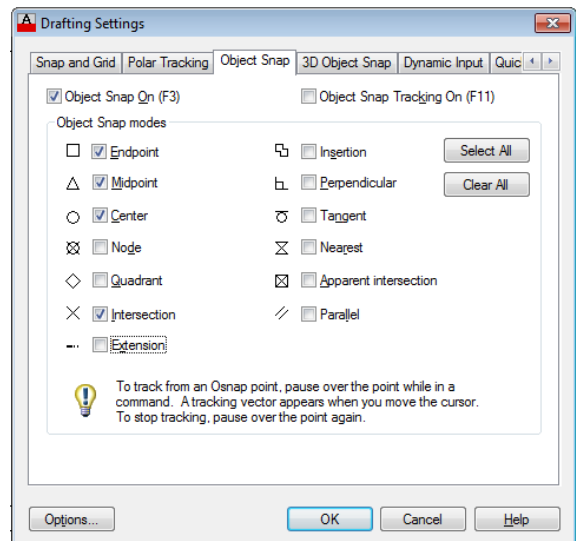
Procedure

1. Open up the Imperial Template file that you have created in Activity #3.

2. Change the current layer that you want to work on right away to Border by going to the ribbon layer pulldown or typing "layer" to access the Layer Properties Manager.



3. Now go to the Object Snap Setting by typing OSNAP or on the bottom toolbar and right mouse clicking on Object Snap icon and then left mouse click on "Settings". Understand that you may have to change these to be able to draw your border and text as the lines for your title block will not want to start where you want them to if the wrong OSNAP is selected 😊



4. Using the **BOLDED** information below, complete the border and title block drawing as seen on the first page of this tutorial. Use the “line” command and whichever coordinate entry method (absolute, relative, polar, mouse) you feel most comfortable with.

Border: .5 inches in from the edge of the paper

Title Block Height: .75 inches up from the bottom border line

Name, Date, Scale Drawing No. sections: 1.75 inches long x .375 high

Title section: 4.5 inches long x .75 high

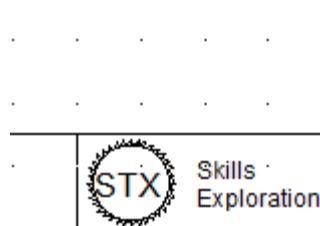
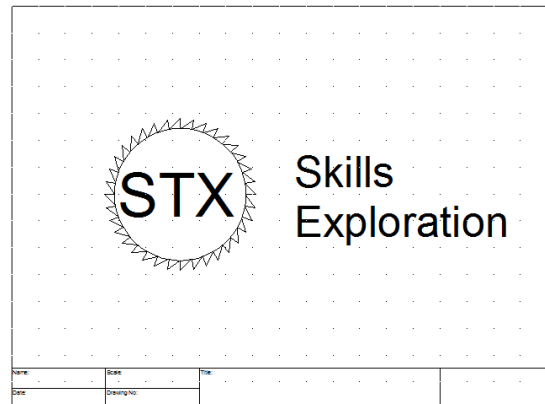
Logo section: 2 inches long x .75 inches high

5. Once the title block is completed you will add text labels to each box indicating what should go in it. Change the snap to .025 and using the text command, add small text (.075”) into the remaining blocks for Name, Scale, Date, Drawing No. and Title as shown below.

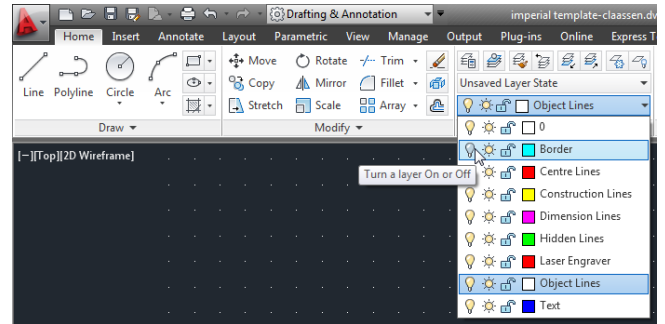
Name:	Scale:	Title:
Date:	Drawing No:	

6. When the title block is complete, create your personal symbol. Draw this in a relatively big size and then scale it down to fit after. To scale it down;

- Command: Scale (enter)
- highlight the entire object
- right mouse click
- select base point
- scale it to fit the space by dragging the mouse



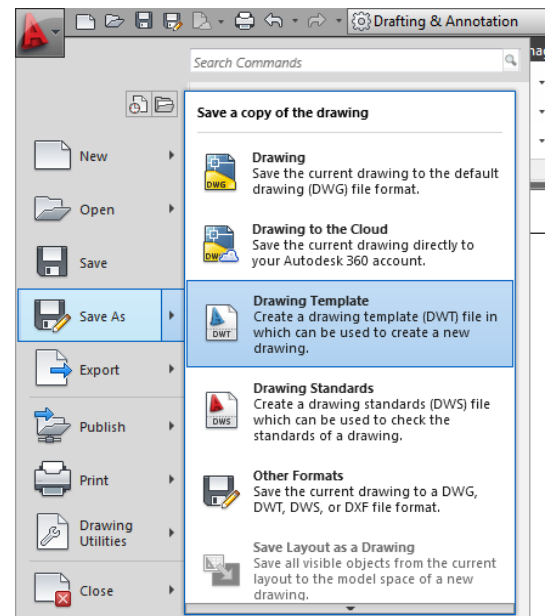
7. Finally, change the LAYER you are currently working on from “Border” to “Object”, then turn OFF the border layer so it is not seen. Your border will now be hidden until you need it after you have completed a drawing.

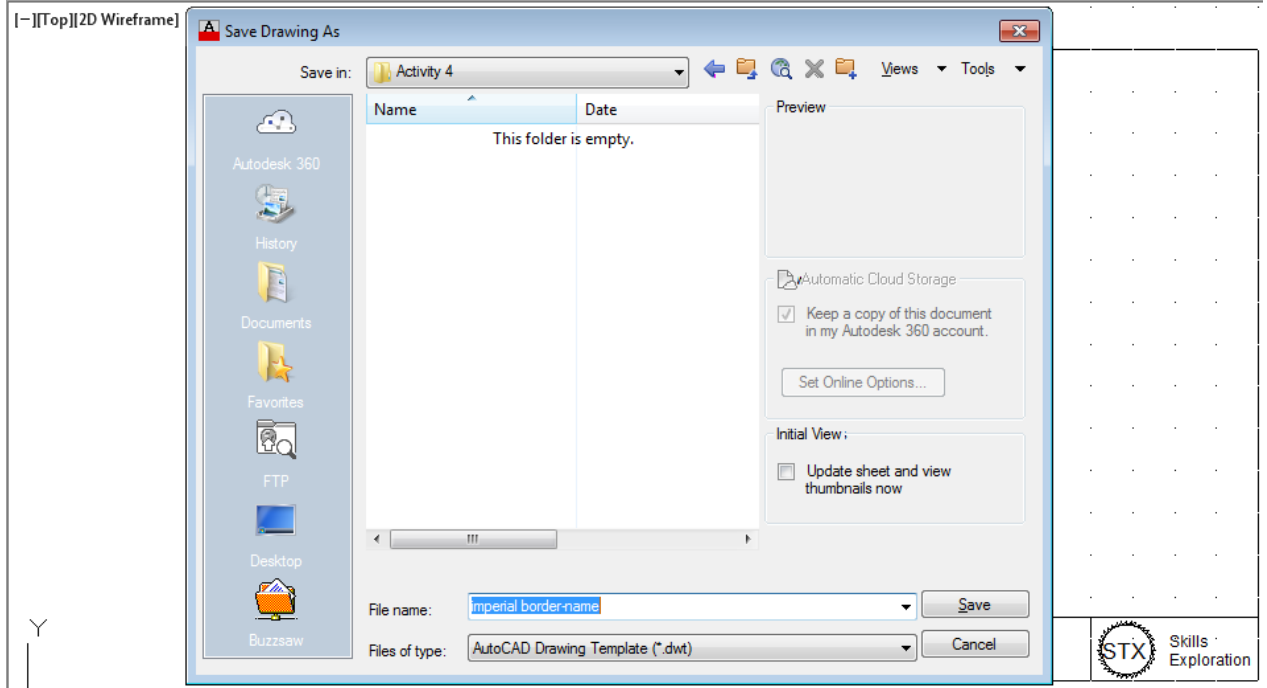
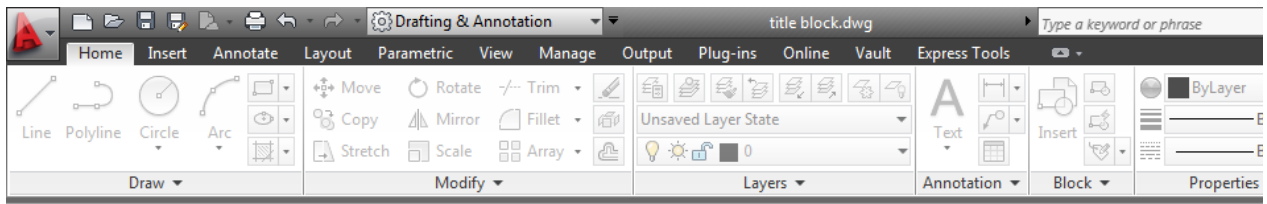


8. When you are finished, save the file as another **Drawing Template** so you can use the border over again for all of the assignments you will complete for this course.

To save as a template, select Save As from the **Application Menu** or the **Quick Access** toolbar in the upper left corner of the program and call it:

imperial border-name.dwg.





Y
X

