

# STUDENT GUIDELINES FOR SAFE USE OF ARTIFICIAL INTELLIGENCE (AI)

## PROTECT YOUR PRIVACY >

Keep your information private. Don't include any personal or private information when using AI tools. Use AI tools approved by your district or teacher. These have been checked to ensure they are safe.



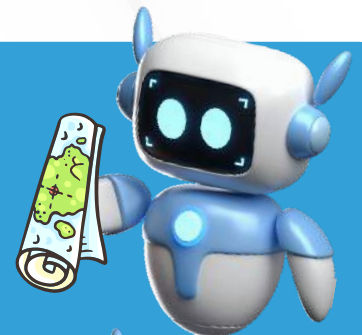
## BE HONEST AND ETHICAL >

Don't use AI to cheat, plagiarize, or complete assignments for you. Ask your teacher when you can or cannot use AI and be sure to properly credit the AI generated content. Be transparent. Maintain your academic integrity.



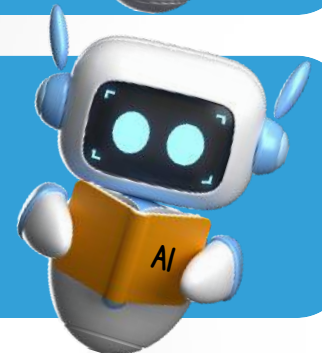
## LEARN WITH NOT FROM AI >

AI should improve learning, not replace your own thoughts. Use AI as a learning companion or helper to assist you with certain tasks but make sure to always add in your own ideas. (80/20 rule)



## KEEP LEARNING ABOUT AI >

AI is a new tool that is constantly changing. Keep learning about how AI works including its biases and limitations, then you can safely and effectively pick the right AI tool.



## CHECK FOR AI BIAS AND ACCURACY >

AI can produce bias or inaccurate information because it is trained on human produced data. Apply critical thinking, question content, and always verify information from other reliable sources.

