

STUDENT GUIDELINES FOR SAFE USE OF ARTIFICIAL INTELLIGENCE (AI)

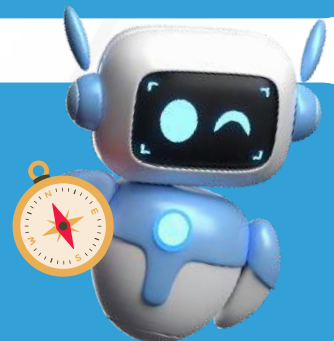
PROTECT YOUR PRIVACY >

Keep your information private. Don't include any personal or private information when using AI tools. Use AI tools approved by your district or teacher. These have been checked to ensure they are safe.



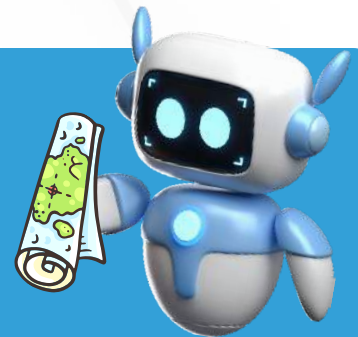
BE HONEST AND ETHICAL >

Complete your own work. Don't use AI to cheat, plagiarize, or complete assignments for you. Use only with teacher approval. If you do use it, don't claim it as your own, cite it.



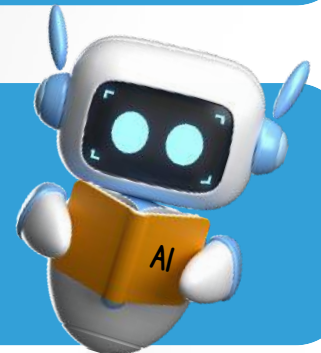
LEARN WITH NOT FROM AI >

AI should improve learning, not replace your own thoughts. Use AI as a learning companion or helper to assist you with certain tasks but make sure to always add in your own ideas. (80/20 rule)



KEEP LEARNING ABOUT AI >

AI is a new tool that is constantly changing. Keep learning about how AI works including its biases and limitations, then you can safely and effectively pick the right AI tool.



CHECK FOR AI BIAS AND ACCURACY >

AI can make mistakes or show unfairness because it learns from human made content. Apply critical thinking, question content, and verify information from other reliable sources.

