




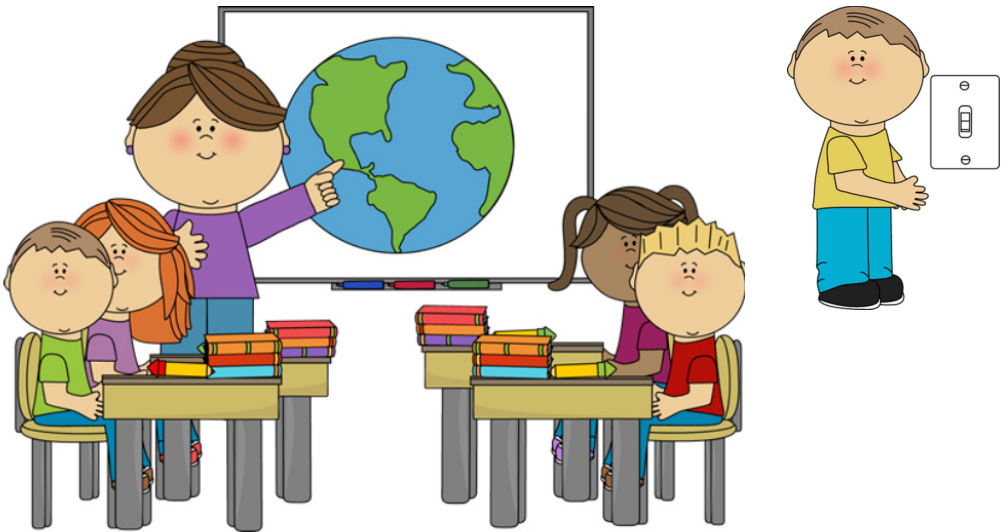
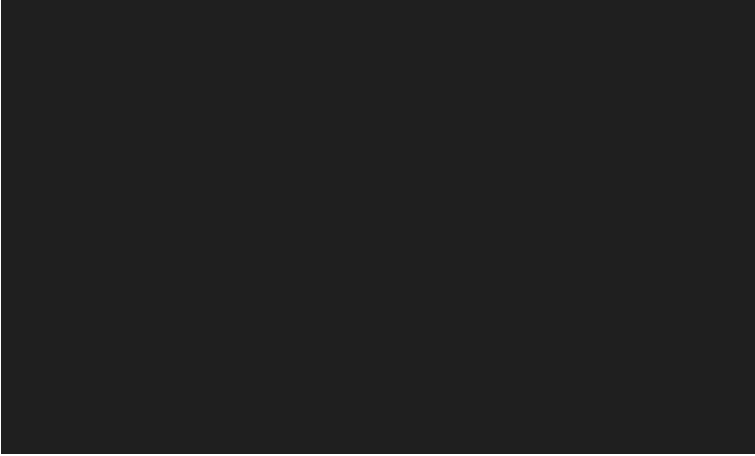
School District 71  
Inclusive Education  
**Core Word Approach**




The button for **on** is located on the home page.



It is dark. I can not see.  
Please turn  the  
lights.



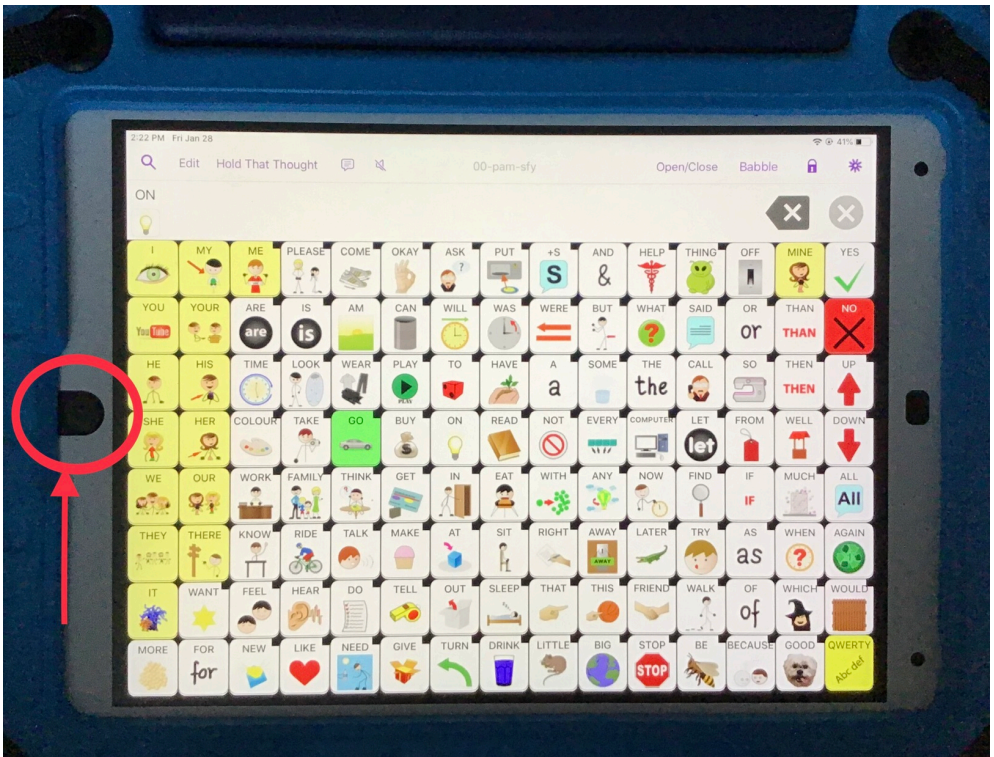
Thank you for turning   
the lights. I can see now!

I press the home


button to turn



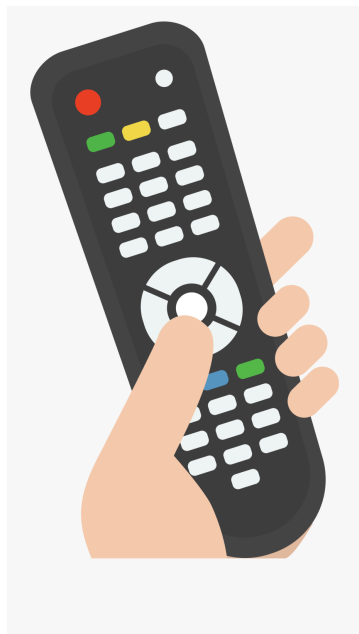
my talker screen.



I use the remote to

turn  the

tv.





Yucky!

Stinky feet!

Put your socks




please.





I put  my jacket.



Turn  the tap.



I want some water.



Put the radio



.



I like to listen to music in  
the car.

First, press your  
button,



then put your finger  
your nose.



Press your  
again.



button

Now, put your hands  
your head.



What should we put

our hands  next?



