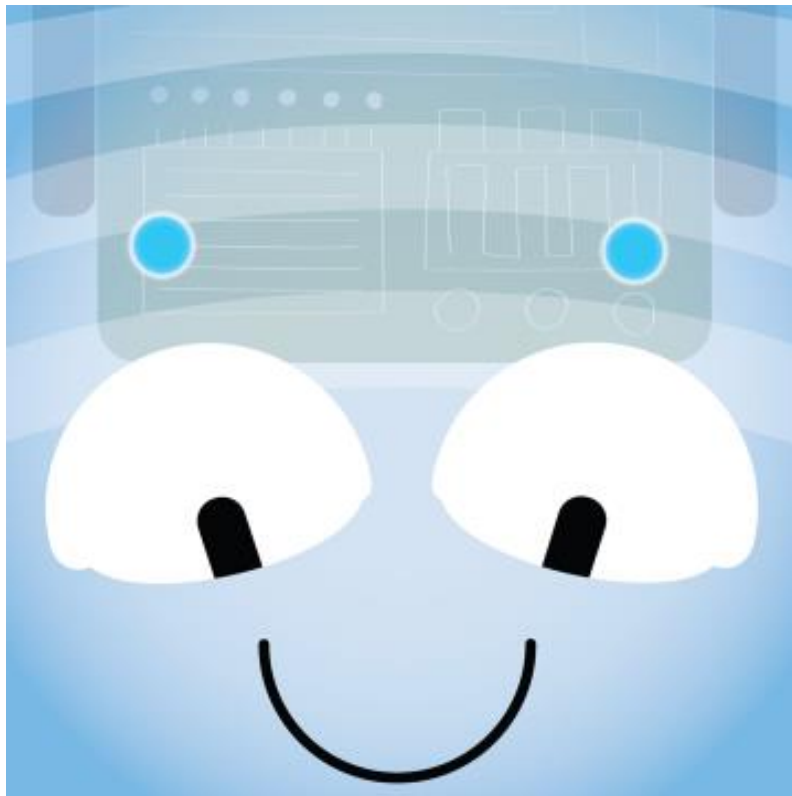
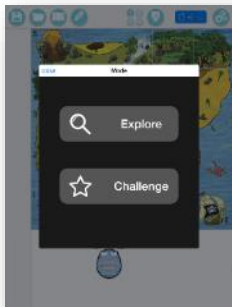


Getting Started with Blue-Bot®



When the Blue-Bot App is launched for the first time it has limited functionality. After the App has connected to a Blue-Bot all functions will be unlocked. This only needs to be done once. Please see later in the guide for further details of connecting to Blue-Bot.

After the App has opened, the option to select a mat will appear. Tap on a mat to select it (mats can also be imported or photographed – see later in the guide).



Two modes are available. Tap one to select it.

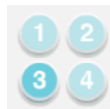
Explore mode is open ended, allowing you to set your own challenges and activities.

Challenge mode provides you with a range of activities and problems to solve.

Modes can be switched at any time using the buttons on the main toolbar.

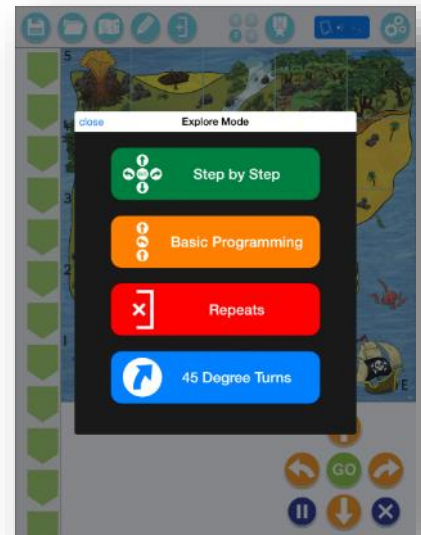


Explore Mode



Explore mode offers four different programming options.

1. **Step-by-Step** – This allows a Blue-Bot program to be built one command at a time. As the command button is tapped, Blue-Bot will move and the command will be added to the program. The entire program can be played back by pressing **GO**.
2. **Basic Programming** – A number of commands can be added to the program before they are run. Commands can be added by tapping the command buttons or by drag and drop. Commands can also be moved around and deleted.
3. **Repeats** – This mode incorporates **Basic Programming** and also allows one or several commands to be repeated (looped)
4. **45° Turns** – This mode builds upon **Repeat** and allows Blue-Bot to be turned through 90° and 45°.





Once a programming mode has been selected a Blue-Bot icon and a mat will be displayed. Drag the Blue-Bot icon onto the mat to the position you wish it to start from. When you release Blue-Bot it will snap into a square.

The command buttons and command sequence will be displayed.



To add a command to the program either tap the command button once or drag it.

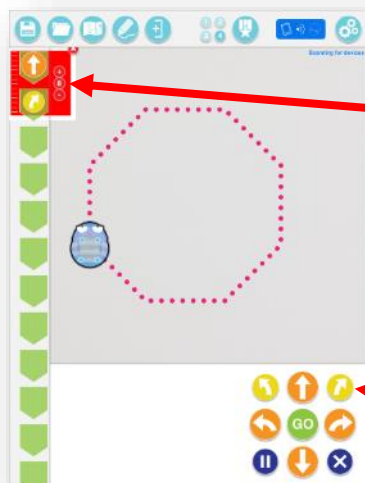


To move a command's position in the program drag it to a new position.

To remove a command drag it off the program line and let go of it.



Repeat and 45° Mode



To repeat a command or a group of commands tap the repeat button.



Tap in the red circle by the first command in the repeat sequence. Then tap in the circle by the last command in the repeat sequence. A red surrounding bar will appear. Use the + and - minus buttons to select the number of times the commands should be repeated.

45° degree turn

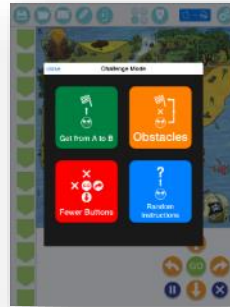
Note: In 45° mode the mat will be greyed out because Blue-Bot will not move a complete square at a time when rotated 45°.

Challenge Mode

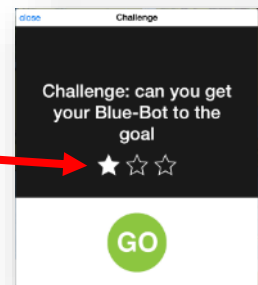


There are four different types of challenges.

1. **Get from A to B**
2. **Obstacles**
3. **Fewer Buttons**
4. **Random Instructions**

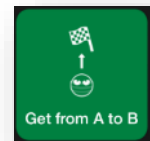


Difficulty Levels – For each type of challenge there are 3 difficulty levels. The level can be selected using the stars which can be seen when a challenge is opened.



1. Get from A to B

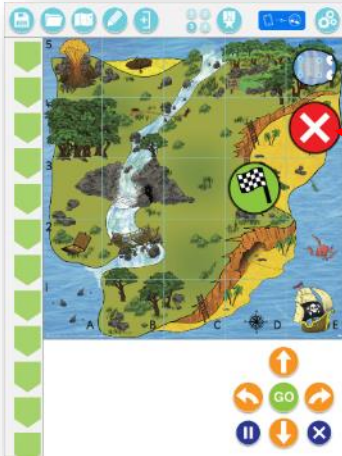
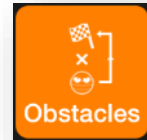
From a random starting point write a program to get to the destination flag. These challenges deliberately do not tell you that you've failed to complete them. Keep trying until you succeed. There is no single correct answer. As long as the destination is reached you have succeeded.



Write a program to get to the destination.

2. Obstacles

These challenges are the same as those in **Get from A to B** but with obstacles in the way. These challenges deliberately do not tell you that you've failed to complete them. Keep trying until you succeed. There is no single correct answer. As long as the destination is reached you have succeeded.



Write a program to avoid the obstacles and get to the destination.

3. Fewer Buttons

One or two command buttons are removed and the challenges need to be solved without them. These challenges deliberately do not tell you that you've failed to complete them. Keep trying until you succeed. There is no single correct answer. As long as the destination is reached you have succeeded.



Write a program to get to the destination flag without all the command buttons being available.



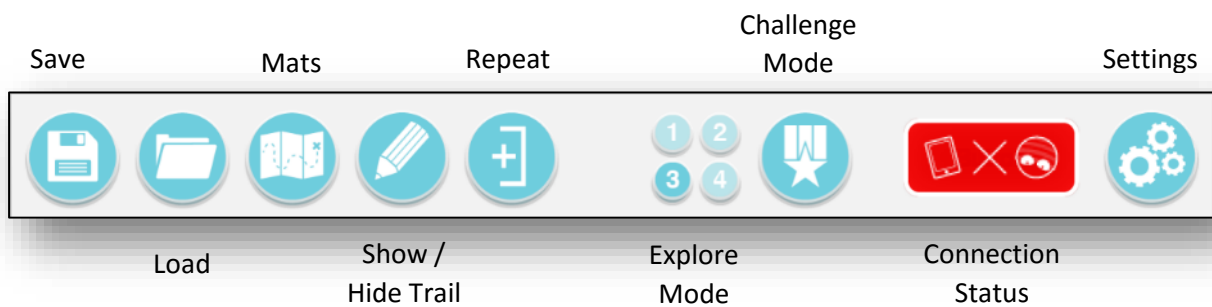
4. Random Instructions

Read a simple program and predict what it will do.



Read the program and predict where Blue-Bot will get to. Drag the destination flag to where you think that will be.

Main Menu Bar



Saving and Loading



To save a program:

1. Tap the save icon.
2. Tap on a save slot.
3. Type in a name for the program.
4. Tap save.

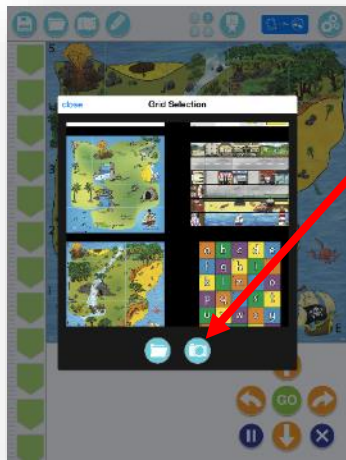
To open a saved program:

1. Tap load.
2. Tap on the file to load.

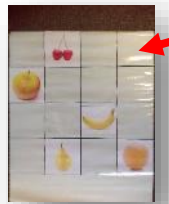
NB There are nine save slots available.

Mats

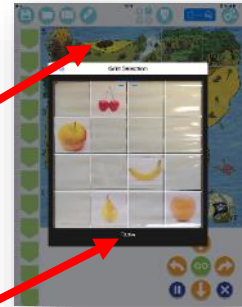
Tap on a mat to select it. To photograph your own mat:



1. Tap the camera icon

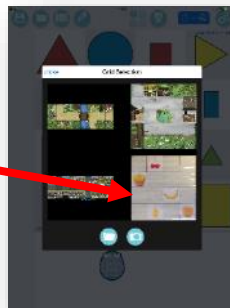


2. Take a photo of the mat. Try and get it as centred as possible.



3. Tap + - to select the right number of grid squares. Then tap Done.

4. Select the photograph from the mat list.



5. The photographed mat is now ready to be used.



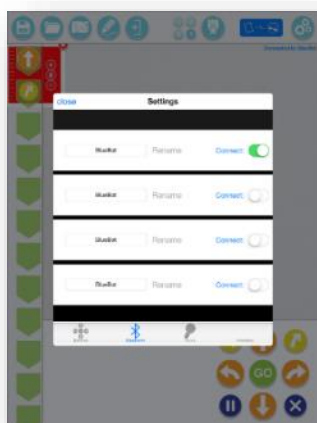
Settings

Show / Hide Buttons



On this screen, buttons in the app can be hidden or unhidden by tapping on them. For example the mats button could be switched off making it more difficult for children to change mats and therefore remain focussed on one.

Connect, disconnect and rename Blue-Bot

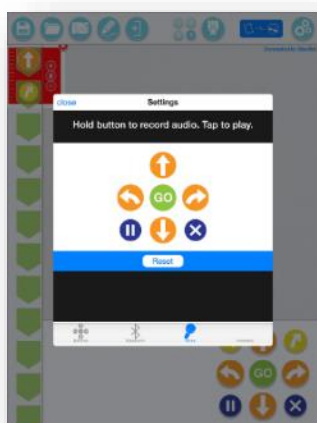


Connect or disconnect from a Blue-Bot using the slide switches. A Blue-Bot can only be connected to one device at a time.

To rename a Blue-Bot you must be connected to it. Tap on Rename. Enter a new name and then tap on rename again. Blue-Bot will disconnect and should reappear in the list with a new name.

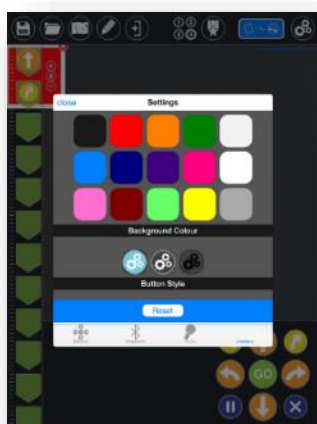
Blue-Bots can be renamed to help with classroom management. You might also add a small label or number plate to each Blue-Bot with its name so you can easily identify which is which.

Voice Recorder



This screen allows a recording to be made for each button. As Blue-Bot moves the recording will be played back. For example the word 'Forward' could be recorded for the forward button. Recording a voice or sound for each command will mean children get auditory feedback which can help to reinforce the use and understanding of particular commands and language.

Interface Colors



This page allows the screen background color to be changed. It also allows the button color to be changed. Tap on the colors or buttons to select them. Changing the colors used may make the screen clearer for users with specific visual needs.