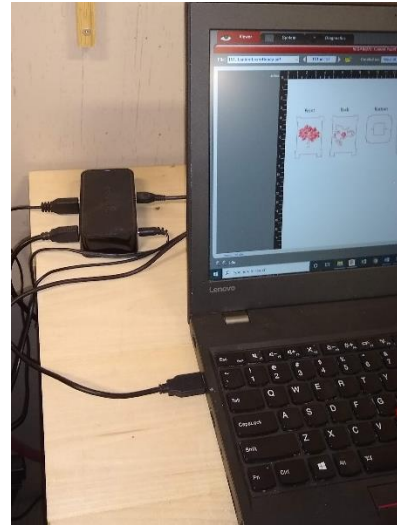


LASER OPERATION GUIDE – *Lantern Design Verification Using Paper*

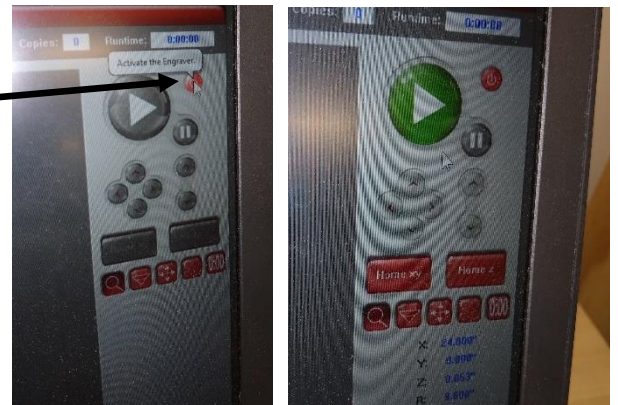
1. Plug in the 'USB Expander' to your computer. This connects the Laser and the mouse.



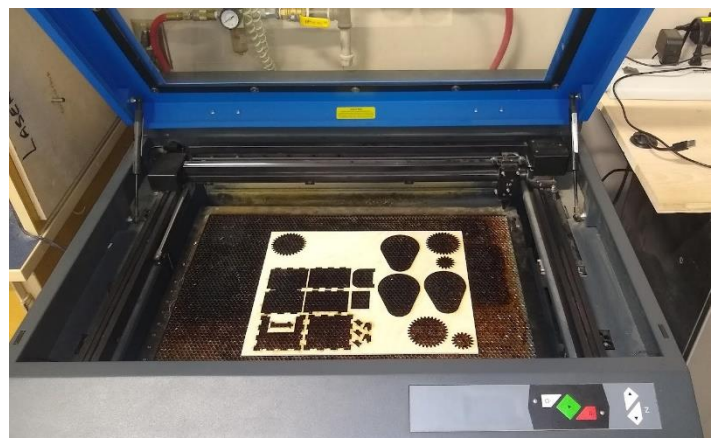
2. Wait for the Laser to 'Initialize'

When it is available, press the red button to power the laser on.

Once the laser is ready, the big green 'play' button will turn green (don't press)



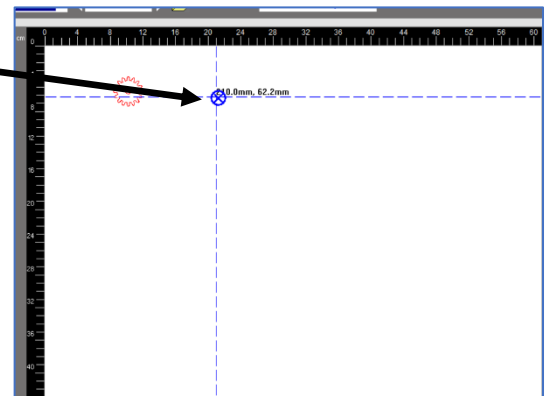
3. Position your material in the Laser



4. Select the 'Focus View' button



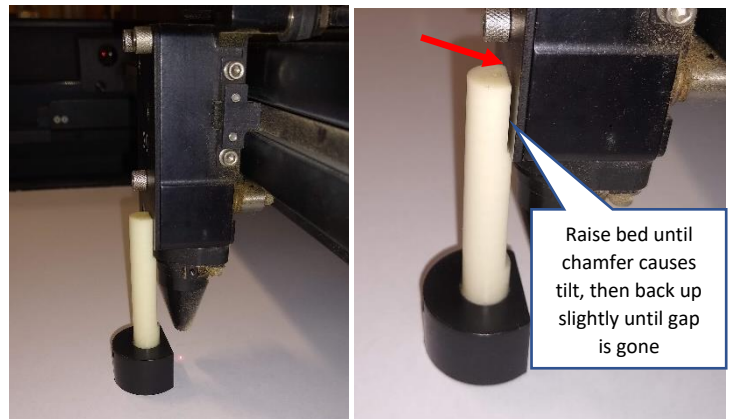
5. Click in the Laser's field to move the laser out over your area to be cut



6. Use the laser's 'focus adjustment tool' to adjust the distance between the surface of your work and the laser carriage

Focus is critical for success. Adjust the laser bed up and down using the arrows on the front panel of the laser.

Raise the laser's bed until the tool tilt's slightly creating a gap at the top then lower until face of tool reconnects with laser head.

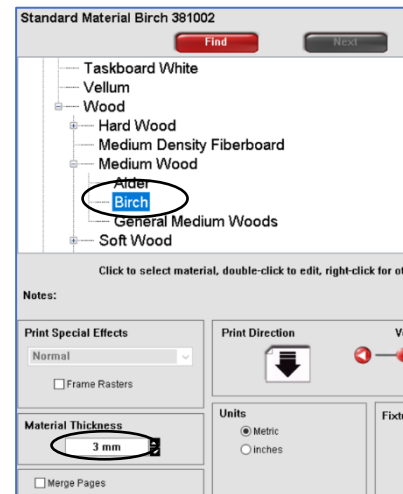


7. Select the 'Zoom' button, then select the 'Settings' button in the lower right corner

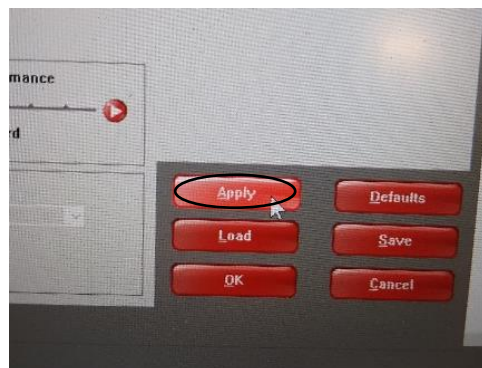


8. Selecting the tab at the top 'Materials Database', choose from the menu using the '+' symbols to expand sub-menus when necessary

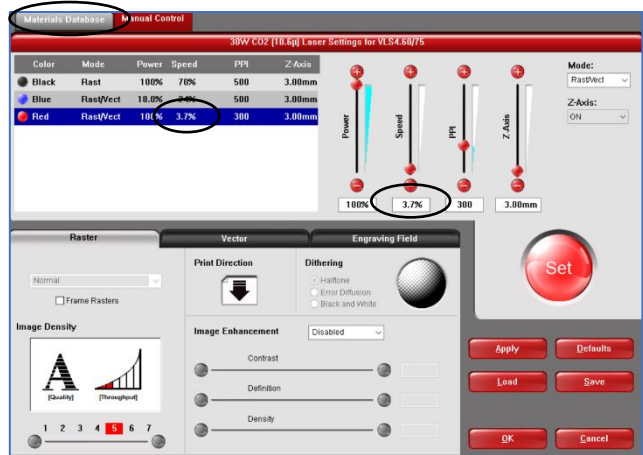
Choose: Natural > Wood > Medium Wood > Birch. Set "Material Thickness" to 0.125" or 3 mm



9. Select 'Apply' to save your 'Settings' changes.



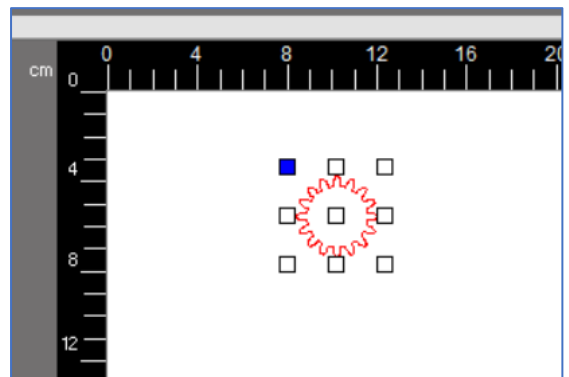
10. Select the 'Manual Control' tab to make a tweak to the settings. Your Red line type will show a speed of 14%. Click on this then adjust the 'Speed' to 10%. Click the red 'Set' button and make sure the change to Red is as shown. Click OK



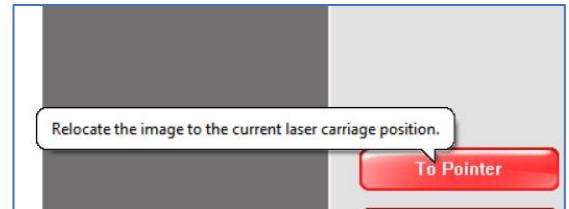
11. With the 'Focus Tool' selected, click around the laser field to position the spotting laser on the material where the upper left corner of your image will be. (please consider use of material and minimize waste)



12. Select the 'Relocate' tool and make sure that the upper left box surrounding the image is active (blue). Click it if not.



13. Select 'To Pointer' to move the active box to the Laser Pointer location.



14. Open the top air valve and the valve on the left (shown closed). They are open when aligned with the pipe.



Turn on the fume extraction using the button on the front of the machine



15. You are now ready. Press the big green 'Play' button

