

On-Screen Keyboard with Word Prediction (Windows 7)

Introduction

On-Screen Keyboard is an accessibility feature built into Windows 7. Once enabled, users can enter text without the need to shift focus between the keyboard and screen. On-Screen Keyboard also gives the user the option of using word prediction function on the keyboard.

Learning Objectives (Calibri 14pt bold)

Completion of this tutorial will give you experience with the following:

- Enable On-Screen Keyboard
- Interact with On-Screen Keyboard's word prediction function
- Select user options within On-Screen Keyboard

This tutorial assumes

- That you are running a Windows computer with Windows 7 installed



Case Study

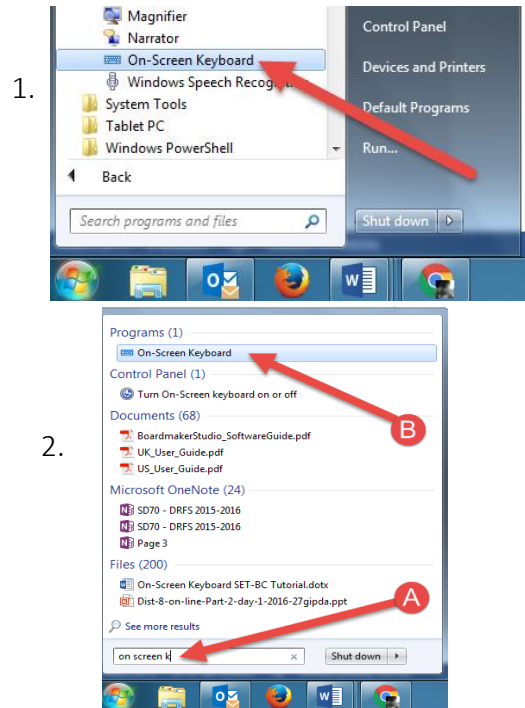
- (1) Elyssa is a grade 6 student that has difficulty shifting her focus between the keyboard and the computer screen. As a result, she often gets "lost" when shifting her attention from typing on the keyboard, to reading on the screen. Using On-Screen Keyboard enables Elyssa to keep her focus on the screen.
- (2) Colin is a grade 10 student who uses an electric wheelchair for mobility. He is adept with joystick controls, but is unable to access a conventional computer keyboard. Using On-Screen Keyboard with a joystick input device, he is able to independently enter text with independence.

Using the On-Screen Keyboard (and word prediction)

1

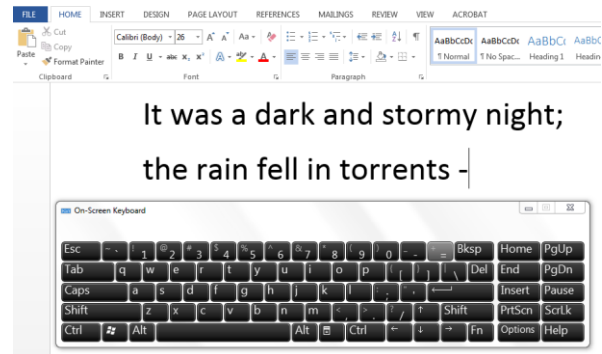
To enable the on-screen keyboard you have two options:

1. click the **Start** button , click **All Programs**, click **Accessories**, click **Ease of Access**, and then click **On-Screen Keyboard**.
2. click the **Start** button , in the search field (A), start typing "On Screen Keyboard" and the option to open it will appear at the top of the list (B)



2

Once the On-Screen Keyboard is enabled, it will remain on the screen and can be used with any pointer device (such as a mouse) to enter text in word-processing or webpage text fields.

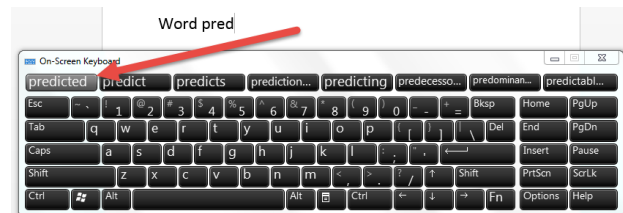



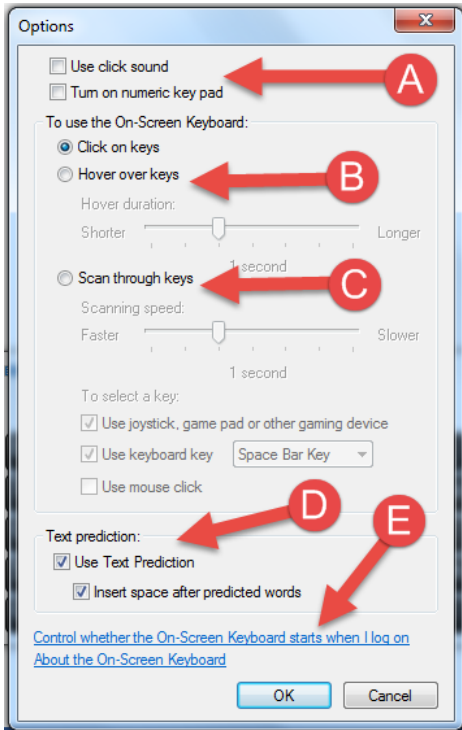
3

On-Screen Keyboard Word Prediction:

When text prediction is enabled, as you type, On-Screen Keyboard displays a list of words that you might be typing.

When the word you are typing appears in the list of predicted words, click on it to insert it into the text field in the document or webpage.



<p style="text-align: center; font-size: 2em;">4</p>	<p>On-Screen Keyboard Options:</p> <p>Clicking the Options button on the On-Screen Keyboard will open a separate window.</p>	
<p style="text-align: center; font-size: 2em;">5</p>	<p>Options Menu:</p> <ul style="list-style-type: none"> (A) Option to toggle click sounds and numeric keyboard (B) Option for clicking on keys or using a “Hover over” (dwell) selection (C) Options for scanning including selection of scanning tool (switches, joysticks, etc.) (D) Option to toggle word prediction and automatic word spacing (E) Shortcut to selecting On-Screen Keyboard to open automatically 	



Tip...

For students who have trouble tracking between screen and keyboard, On-Screen Keyboard keeps focus in one place.

Word prediction can enhance both speed and accuracy for students that struggle with keyboarding.